

PROUD MARY

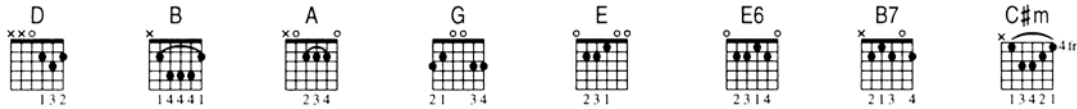
Creedence Clearwater Revival

Words and music by John Fogerty Transcribed by Andy Aledort

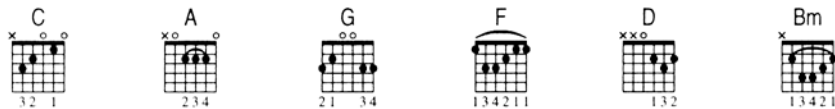
Gtr.1 (John Fogerty) chord shapes

Tune down one whole step (low to high: D G C F A D)

All pitches sound one whole step lower than written (key of D).



Gtr.2 (Tom Fogerty) chord shapes (standard tuning)



A Intro (0:00, 1:59)

Moderate Rock ♩ = 116

Gtr.1 chords: (D) (B) (D) (B) (A) (G) *(open) (G) (E)
 Gtr.2 chords: C A * open C A G F F D



B Verses

(0:12) 1. Left a good job in the city
 (0:44) 2. Cleaned a lot of plates in Memphis
 (2:11) 3. If you come down to the river

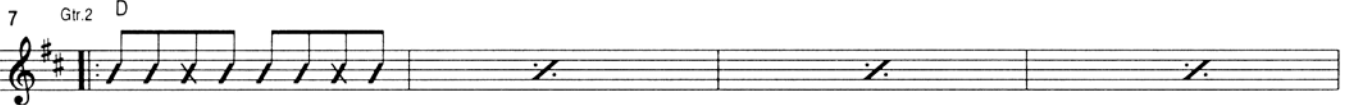
Workin' for the man every night and day
 Pumped a lot of pain down in New Orleans
 Bet you're gonna find some people who live

(E) (E6) (E) (E6) (E)



Rhy. Fig. 1

end Rhy. Fig. 1



And I never lost one minute of sleepin'
 But I never saw the good side of a city
 You don't have to worry though you have no money

worryin' 'bout the way things might have been
 'til I hitched a ride on a river boat queen
 People on the river are happy to give

(E) (E6) (E) (E6) (E)



As heard on Creedence Clearwater Revival's Fantasy recording *Chronicle*

©1968 by Jondora Music. All rights reserved. Used by permission.

PROUD MARY

Creedence Clearwater Revival

C Pre-chorus (0:28, 1:00, 2:27)

(3rd time) To Coda ⊕
(skip ahead to **C**)

Big wheel keep on turnin' Proud Mary keep on burnin' Rol-

*Gr.1 plays Fill 1 first time
Gr.1 plays Fill 3 second time
Gr.1 plays Fill 4 third time*

(B7) (C#m)

Gr.1

Rhy. Fig.2

15 Gr.2 A Bm

endRhy. Fig.2

D 1st and 2nd Choruses (0:36, 1:08)

lin' Rollin' Rollin' on a river

(E) (E6) (E) (E6) (E) (E6) (E) (E6) (E) *Gr.1 plays Fill 2*

19 D

(go back to **B** 1st time)

E Re-intro (1:16)

Gr.1 (D) (B) (D) (B) (A) (G) * (open) (G) (E)
Gr.2 C A * open C A G F F D

23

* ① ② * ① and ②

Fill 1 (0:34) (C#m) Fill 2 (0:40, 1:12, 1:55, 2:39) (E) (E6) (E) (E6) (E)

* Gr.1 (doubled) * Gr.1 doubled

T	(0)	0	0	0	0	0	0	2/4	4	2	0	0	2	0
A	(1)	0	2	0	1	1	1	2/4	4	2	1	1	2	1
B	(2)	2	2	2	2	2	2	2/4	4	2	1	1	2	1
	(3)	0	0	0	0	0	0							

* Tuned down one whole step (low to high: D G C F A D). All pitches sound one whole step lower than written (key of D).

Fill 3 (1:06) (C#m) Fill 4 (2:33) (C#m)

* Gr.1 (doubled) * Gr.1 (doubled)

T	0	2	0	2	2/4	2	4
A	0	2	0	2	2/4	2	4
B	0	2	0	2	2/4	2	4

* Tuned down one whole step (low to high: D G C F A D). All pitches sound one whole step lower than written (key of D).

PROUD MARY

Creedence Clearwater Revival

F Guitar Solo (1:28)

Gtr.2 plays Rhy. Fig.1 four times

(E)
D

29

* Gtr.1 (doubled)

* Tuned down one whole step (low to high: D G C F A D). All pitches sound one whole step lower than written (key of D).

33

Roll-

(B7)
A

(C#m)
Bm

37 Gtr.2 plays Rhy. Fig.2

D.S. al Coda
(go back to [A])

G 3rd Chorus (1:51)

lin' Rollin' Rollin' on a river

(E) (E6) (E) (E6) (E) (E6) (E) (E6) (E)

Gtr.1 Gtr.1 plays Fill 2

41 Gtr.2 D

Coda (2:35)

H Out-chorus

lin' Rollin' Rollin' on a river Roll-

(E) (E6) (E) (E6) (E) (E6) (E) (E6) (E)

Gtr.1 Gtr.1 plays Fill 2

45 Gtr.2 D (play 4 times and fade)

PROUD MARY

Creedence Clearwater Revival

Words and music by John Fogerty Transcribed by Andy Aledort

bass line

A Intro (0:00, 2:00)
Moderate Rock ♩ = 116

B Verses (0:12, 0:44, 2:11)
1. Left a good...
2. Cleaned a lot...
3. If you come...

1 C A C A G F D D

Elec. Bass

(3rd time) To Coda ⊕ **C** 1st and 2nd Pre-choruses (0:28, 1:00)
(skip ahead to meas. 44)
Big wheel...

9

D 1st and 2nd Choruses (0:36, 1:08) |1. _____ |2. _____ **F** Re-intro (1:16)

17 Bm D C A

F Guitar Solo (1:28)

25 C A C A G F D5 F D D

32 A

G 3rd Chorus (1:51)

D.S. **⊕** al Coda (go back to **A**)

38 Bm D

⊕ Coda

H 3rd Pre-chorus (2:27)

44 A Bm

I Out-chorus (2:36)

48 D

* 1st time only

As heard on Creedence Clearwater Revival's Fantasy recording *Chronicle*

©1968 by Jondora Music. All rights reserved. Used by permission.