

# WALK ON THE WILD SIDE *Lou Reed*

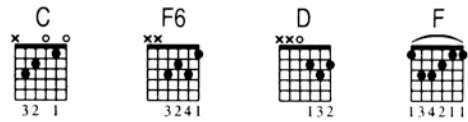
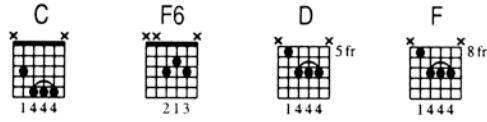
WORDS AND MUSIC BY Lou Reed TRANSCRIBED BY Matt Scharfglass

\*\*\*NEW FORMAT\*\*\*

## Bass lines are included in the guitar transcriptions

Gr. 1 chords (clean, dark elec., left channel)

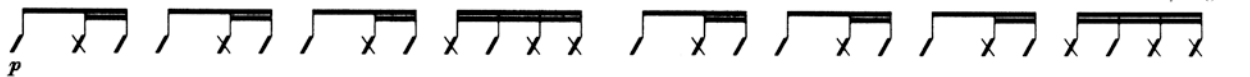
Gr. 2 chords (acous., right channel)



### A Intro (0:00)

Moderately ♩ = 103

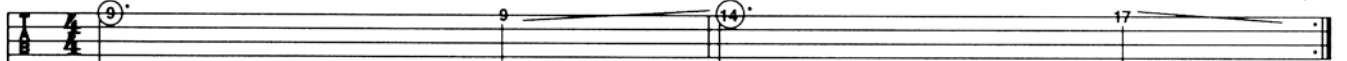
Gr. 1 (clean elec. tone) & 2 (acous.)  
Rhy. Fig. 1



#### 1 Bass 1 (fretless elec.)

Bass Fig. 1

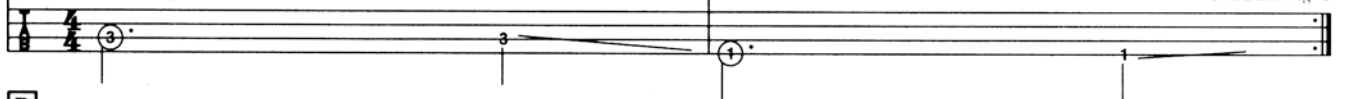
(play 4 times)  
end Bass Fig. 1



Bass 2 (acoustic upright)

Bass Fig. 2

(play 4 times)  
end Bass Fig. 2



### B 1st Verse (0:19)

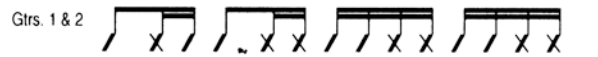
1. Holly came from Miami F.L. A.  
Hitchiked her way across the U.S. A.

Gr. 1 & 2 play Rhy. Fig. 1 twice  
Bass 1 plays Bass Fill 1 first time

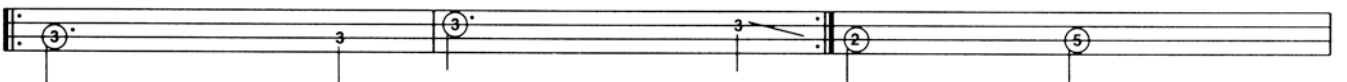
Plucked her eyebrows on the way

C D

Rhy. Fig. 2



#### 3 Bass 2



Shaved her legs and then he was a She says hey babe take a walk on the wild side Said

F

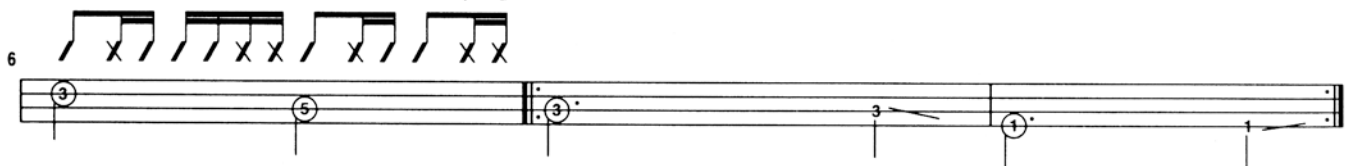
D

C

F6

Gr. 1 & 2 play Rhy. Fig. 1 twice  
Bass 1 plays Bass Fig. 1 twice

end Rhy. Fig. 1



(0:43)

### C 2nd Verse (0:52)

2. Candy came from out on the island  
In the back room she was everybody's darlin'

Gr. 1 & 2 play Rhy. Fig. 1 twice  
Bass 1 plays Bass Fill 1 first time

C

F6

F6



\* Play note on right side of slash second time.

As heard on Lou Reed's Arista recording *The Definitive Collection*

©1972 Oakfield Avenue Music Ltd. All rights controlled and administered by Screen Gems-EMI Music Inc. All rights reserved. International copyright secured. Used by permission. Reprinted by permission of Hal Leonard Corporation.



# WALK ON THE WILD SIDE *Lou Reed*

side I said Hey Joe take a walk on the wild side (2:06)  
 F6 C F6  
 C  
 Gtrs. 1 & 2 play Rhy. Fig. 1 twice  
 Bass 2 plays Bass Fig. 2 twice

32

36

lookin' for soul food and a place to eat  
 F6 C F6  
 C  
 Gtrs. 1 & 2 play Rhy. Fig. 1 twice  
 Bass 1 plays Bass Fill 1A

40

shoulda seen him go go go They said hey sugar take a walk on the wild side I said  
 F D C F6  
 Gtrs. 1 & 2 play Rhy. Fig. 1 twice  
 Bass 1 plays Bass Fig. 1 twice

44

hey babe take a walk on the wild side All right (2:38) \* Ha  
 C F6 C F6  
 Gtrs. 1 & 2 play Rhy. Fig. 1 twice  
 Bass 1 plays Bass Fig. 1 twice

47

**G** 5th Verse (2:47)  
 5. Jackie is just speedin' away Thought she was James Dean for a day  
 C F6 C  
 Gtrs. 1 & 2 play Rhy. Fig. 1 twice  
 Bass 1 plays Bass Fill 1A

51

Then I guess she had to crash Valium would've helped that bash She said  
 F6 C D F D  
 Gtrs. 1 & 2 play Rhy. Fig. 2

54

hey babe take a walk on the wild side I said hey honey take a walk on the wild  
 C F6 C  
 Gtrs. 1 & 2 play Rhy. Fig. 1 twice  
 Bass 1 plays Bass Fig. 1 twice

57

Bass Fill 1A (2:15, 2:47)

C  
 C4 E4 G4 F4 E4 D4 C4

# WALK ON THE WILD SIDE *Lou Reed*

## [H] 2nd Chorus (3:09)

side And the colored girls say Doot do do do doot doot do doot doot do do do do doot doot do do do  
 F6 C F6  
*Gtrs. 1 & 2 play Rhy. Fig. 1 simile until fade*  
*Bass 2 plays Bass Fig. 1 until fade*

60 Bass 1

do do do do do do doot do do do do do do doot do do (Doot do doot do doot doot do doot  
 C F6 C

63

doot do doot do doot doot do doot Doot do doot do doot doot do doot doot do doot do doot doot do doot  
 F6 C F6

66

Doot do doot do doot doot do doot doot do doot do doot doot do doot Doot do doot do doot doot do doot  
 C F6 C

69

## [I] Outro/Sax Solo (3:37)

doot do doot do doot doot do doot doo)  
 F6 C F6 C

72

76

Begin Fade

80

Fade Out

84